



# Virginia Healthcare Workforce Briefs

Indicators from the Bureau of Labor Statistics'  
Current Employment Statistics Survey  
**Series 1: State & National Employment**

Series 1, Issue 93

December 2019

## Highlights

- ◆ According to preliminary estimates, Virginia's Health Care & Social Assistance (HC&SA) sector created 1,000 new jobs in November, a gain that represents a one-month annualized employment growth rate of 2.6%. This month's result continues a strong year of employment growth in Virginia's HC&SA sector, which has created 13,800 new jobs so far in 2019.
- ◆ Virginia's total nonfarm payroll enjoyed a significant uptick in growth in November after increasing by 17,700 during the month. This gain translates into a one-month annualized growth rate of 5.4%. This also represents the largest monthly gain in the state's total nonfarm payroll since January.
- ◆ The national HC&SA sector also experienced an acceleration of employment growth in November thanks to the creation of 60,200 jobs during the month. This monthly employment gain translates into a 3.6% annualized growth rate. It also represents the largest job gain in this sector in eight months.
- ◆ As with Virginia's total nonfarm payroll, the nation's total nonfarm payroll also enjoyed its largest one-month gain since January. In November, the nation's total nonfarm payroll increased by 266,000. This gain represents a one-month annualized growth rate of 2.1%.

### Inside this Brief:

Virginia HC&SA Employment	2
Virginia Employment	2
National Employment	3
State Employment Growth	3
About the Data	4

*Data in the report are seasonally adjusted. Self-employed persons, including health professionals in private practice, are not included.*

## Data in Brief

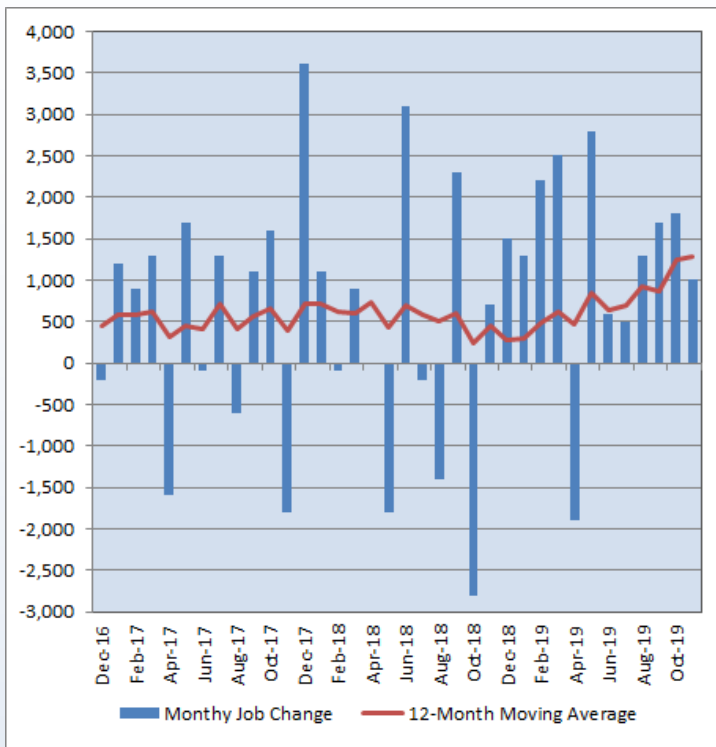
Seasonally Adjusted*	Employment, in Thousands				Growth Rate, Annualized		
	Nov. 2018	Aug. 2019	Oct. 2019	Nov. 2019	12 Month	3 Month	1 Month
<b>Nonfarm, Total</b>							
Virginia	4,009.2	4,040.5	4,031.6	4,049.3	1.0%	0.9%	5.4%
National	150,048.0	151,637.0	151,986.0	152,252.0	1.5%	1.6%	2.1%
<b>Health Care &amp; Social Assistance</b>							
Virginia	444.4	455.2	458.7	459.7	3.4%	4.0%	2.6%
National	20,113.2	20,538.2	20,620.3	20,680.5	2.8%	2.8%	3.6%
<b>All Other Nonfarm</b>							
Virginia	3,564.8	3,585.3	3,572.9	3,589.6	0.7%	0.5%	5.8%
National	129,934.8	131,098.8	131,365.7	131,571.5	1.3%	1.5%	1.9%

Preliminary estimates are italicized

\*Seasonally adjusted data are adjusted by the Bureau of Labor Statistics to account for weather, holidays and other seasonal changes. Economists use seasonally adjusted data to reveal underlying trends over time. This series uses seasonally adjusted data exclusively. When comparing data in this series to other HWDC series, or publications from other sources, it is important to note whether the data reported have been seasonally adjusted.

## Virginia HC&SA Employment

**Figure 1: Monthly Change in Employment in Virginia’s Health Care & Social Assistance Sector, Seasonally Adjusted.**



According to preliminary data released on Friday, December 20, 2019, by the U.S. Department of Labor, Bureau of Labor Statistics, Virginia’s Health Care & Social Assistance (HC&SA) sector enjoyed another month of solid employment growth in November with the creation of 1,000 new jobs during the month. This month’s employment gain represents the fourth consecutive month in which Virginia’s HC&SA sector has created at least 1,000 jobs. In addition, this represents the seventh consecutive month in which this sector has produced positive job growth.

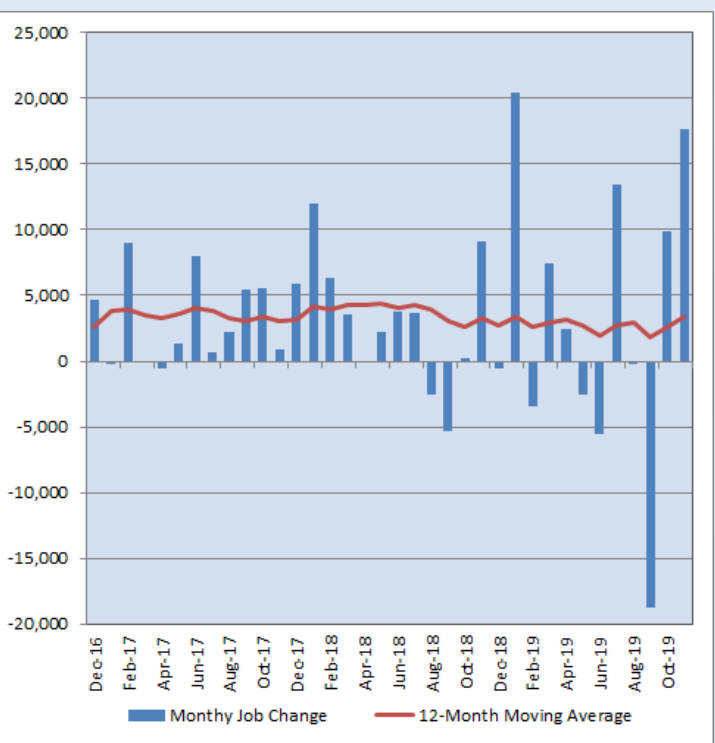
Although Virginia’s HC&SA sector remains a significant contributor to the state’s overall job growth, this month’s employment gain was somewhat below its long-term average. For each of the previous three months, the job gain in Virginia’s HC&SA sector exceeded its 12-month moving average, but this was not the case in November. Regardless, this moving average continued to trend upward during the month. Over the past year, Virginia’s HC&SA sector has created an average of 1,275 jobs per month across the state. This average monthly employment gain translates into a 3.4% growth rate.

## Virginia Employment

In 2019, there has been no clear trend in the monthly employment change of Virginia’s total nonfarm payroll. Instead, the year has been marked by constant fluctuations where employment gains or losses in one month have often been reversed soon afterwards. However, the employment gains from the previous two months provide some evidence that Virginia’s job market may be improving. After increasing by 9,900 in October, Virginia’s total nonfarm payroll enjoyed a stronger gain in November with an increase of 17,700 during the month. This gain represents a one-month annualized employment growth rate of 5.4%. This also represents the largest monthly employment gain in Virginia’s total nonfarm payroll since January.

For the first time since Q1 2018, the monthly employment change in Virginia’s total nonfarm payroll has exceeded its long-term moving average in consecutive months. This has led to a significant rebound in the 12-month moving average of the change in Virginia’s total nonfarm payroll, which has nearly doubled since reaching a year-to-date low in September. Over the past year, Virginia’s total nonfarm payroll has increased by an average of 3,342 jobs per month.

**Figure 2: Monthly Change in Employment in Virginia’s Total Nonfarm Payroll, Seasonally Adjusted.**

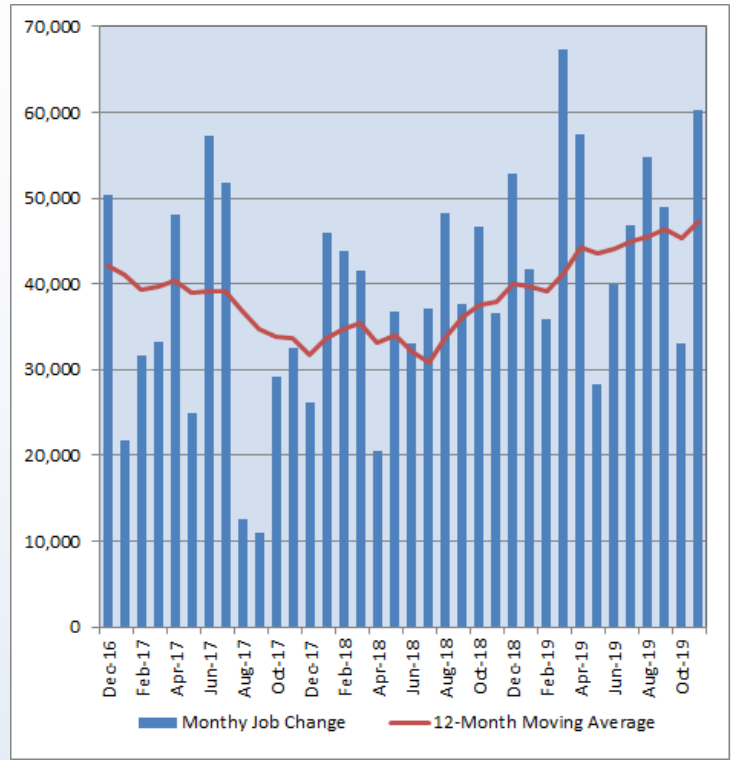


### National Employment

Employment growth in the national HC&SA sector rebounded strongly in November. One month after creating only 33,100 jobs, the national HC&SA sector enjoyed its strongest monthly employment gain since March with the addition of 60,200 new jobs in November. This represents a one-month annualized employment growth rate of 3.6%. Thanks to this strong employment growth in November, the 12-month moving average of the employment change in Virginia's total nonfarm payroll increased to its highest level in more than four years. Over the past year, national HC&SA employment has increased by an average of 47,275 jobs per month, which translates into a 2.8% growth rate.

The nation's total nonfarm payroll also enjoyed stronger employment growth during the month. In November, the nation's total nonfarm payroll increased by 266,000. This gain translates into a one-month annualized employment growth rate of 2.1%. In addition, this also represents the largest monthly employment gain in the nation's total nonfarm payroll since January. Over the past year, the nation's total nonfarm payroll has increased by 2.2 million, and the national HC&SA sector has been responsible for 26% of this growth.

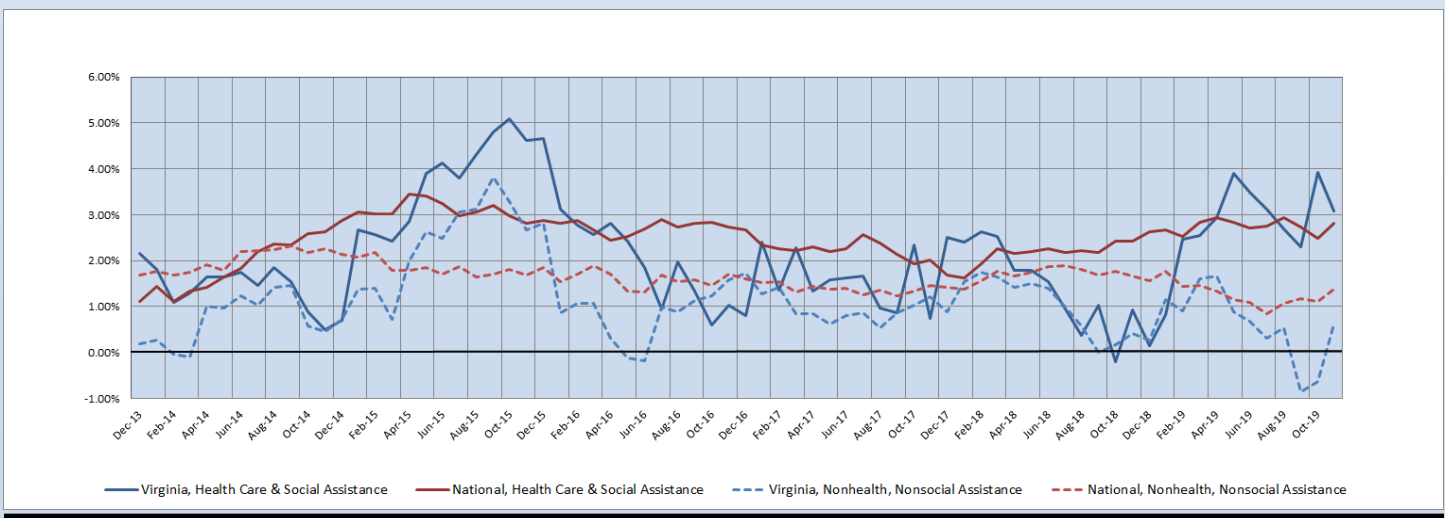
**Figure 3: Monthly Change in Employment in National Health Care & Social Assistance Sector, Seasonally Adjusted**



### State Employment Growth

Despite November's job gain, the six-month moving average of the employment growth rate in Virginia's HC&SA sector fell from 3.93% to 3.08% during the month. Regardless, Virginia's HC&SA sector is still enjoying above-average employment growth relative to the rest of the country. This remained the case in November even though the national HC&SA sector experienced an increase in its six-month employment growth rate moving average from 2.49% to 2.80%. In both Virginia and the nation as a whole, the long-term employment growth in the HC&SA sector exceeds the overall growth in total nonfarm payroll. The six-month moving average of the employment growth rate in Virginia's total nonfarm payroll increased from -0.63% to 0.63% in November, while the comparable national growth rate increased from 1.11% to 1.37%.

**Figure 4: Six-Month Moving Average, Employment Growth, Seasonally Adjusted**



Healthcare Workforce  
Data Center

Perimeter Center  
9960 Mayland Drive, Suite 300  
Henrico, VA 23233-1463

Phone: (804) 367-2115  
Fax: (804) 527-4434  
E-mail: [hwdc@dhp.virginia.gov](mailto:hwdc@dhp.virginia.gov)  
Website: [www.dhp.virginia.gov/PublicResources/HealthcareWorkforceDataCenter/](http://www.dhp.virginia.gov/PublicResources/HealthcareWorkforceDataCenter/)

*HWDC Staff:*

Elizabeth Carter, PhD <i>Executive Director</i>	Yetty Shobo, PhD <i>Deputy Director</i>
Laura Jackson, MSHSA <i>Operations Manager</i>	Rajana Siva, MBA <i>Research Analyst</i>
Christopher Coyle <i>Research Assistant</i>	

The Department of Health Professions Healthcare Workforce Data Center works to improve the data collection and measurement of Virginia's healthcare workforce through regular assessment of workforce supply and demand issues among the 80 professions and 350,000 practitioners licensed in Virginia by DHP.

The HWDC collects data on Virginia's licensed health professionals through surveys completed during the online license renewal and application process. Survey results and data may be accessed on our website: [www.dhp.virginia.gov/hwdc/](http://www.dhp.virginia.gov/hwdc/).

The HWDC also provides a series of Virginia Healthcare Workforce Briefs based on data collected by the US Department of Labor's Bureau of Labor Statistics and the US Department of Commerce' Bureau of Economic Analysis.

Virginia Healthcare Workforce Briefs:

Series 1: State & National Employment (Monthly)

Series 2: Virginia Regional Employment (Monthly)

Series 3: Income & Compensation (Quarterly)

Follow us on. . .

Tumblr: <http://vahwdc.tumblr.com/>

### About the Data

Data in this report are from the US Department of Labor, Bureau of Labor Statistics' Current Employment Statistics program. The CES program surveys about 143,000 businesses and government agencies monthly. Unless otherwise noted, this series uses seasonally-adjusted data that removes seasonal variations related to weather, holidays, weekends, seasons and other predictable variations. This allows us to better examine underlying trends in the labor market. Data from recent months are preliminary and subject to revision in future releases from the CES. Revisions will be reported in future editions of this series. Unless otherwise noted, the CES data presented in this series:

**Includes:**

- ◆ Data on employed individuals drawing a paycheck (payroll employees).
- ◆ All employees, regardless of role, occupation or hours worked.
- ◆ HC&SA employees in the private sector only.
- ◆ Persons employed by health professionals in private practice.
- ◆ Both government and private sector workers in nonfarm employment data.

**Does not include:**

- ◆ Self-employed workers or volunteers, including health professionals in private practice.
- ◆ HC&SA employees in the public sector. (These are counted as government workers in monthly reports).
- ◆ Information on hours worked or the quality of employment.
- ◆ Government workers in HC&SA level data. (Government workers, regardless of occupation and